

RIGIDFLEX

DOUBLE BOOT FITTING

ZJI's double-boot sump entry fittings use a single hole installation with embedded bolts to seal off the containment sump pipe entry. Installation is simple, quick and clean. The RIGIDFLEX fitting pairs with **ANY** manufactured containment sump and piping for an easy sump-entry solution. Also available with UV resistant white design boots.



FEATURES

- Made with **ProTex**, a non-urethane, co-polymer material compatible with all fuel types
- No measurable hydrolysis and naturally anti-microbial for significant durability
- Double sided boot connection to pipe for quick install and maximum seal
- 3rd party tested for compatibility to the UL 2447 requirements
- End-of-sump life warranty

SPECIFICATIONS

FLAT or CURVED SUMP WALL FITTINGS

SMALL

Conduit & Small Diameter Pipe Applications to 1.6" OD (Small Housing 3.25" Hole)

MEDIUM

Medium Diameter Pipe Applications to 3.9" OD (Medium Housing 5.5" Hole)

LARGE

Large Diameter Pipe Applications to 5.0" OD (Large Housing 6.625" Hole)

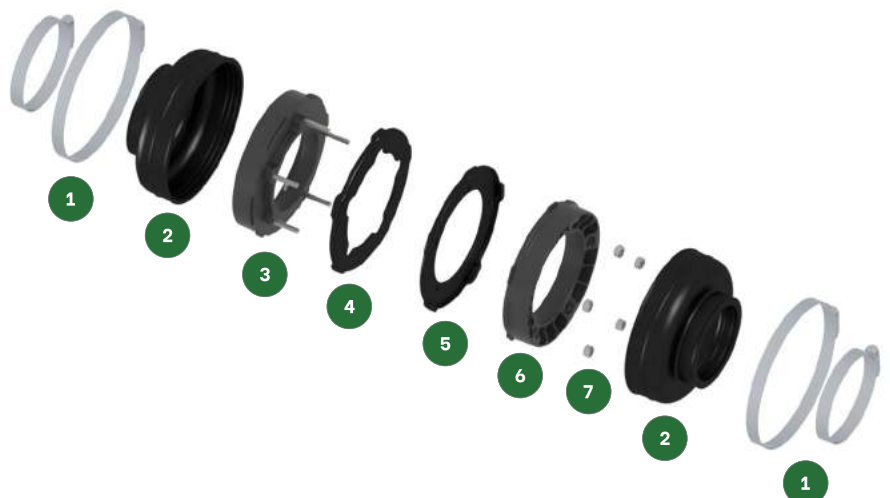
XL

Standard and Custom Fittings for 6" to 12" Pipe Applications

‡ custom sizes available

COMPONENTS

- | | |
|--|--------------------|
| 1 Stainless Steel Clamps | 5 Interior Gasket |
| 2 Flexible Boot | 6 Interior Housing |
| 3 Exterior Housing with Embedded Bolts | 7 Locknuts |
| 4 Exterior Gasket | |



zjiproducts.com
Tel: 844.850.0005
250 N Red Cliffs Drive
4B-236
St George, Utah 84790